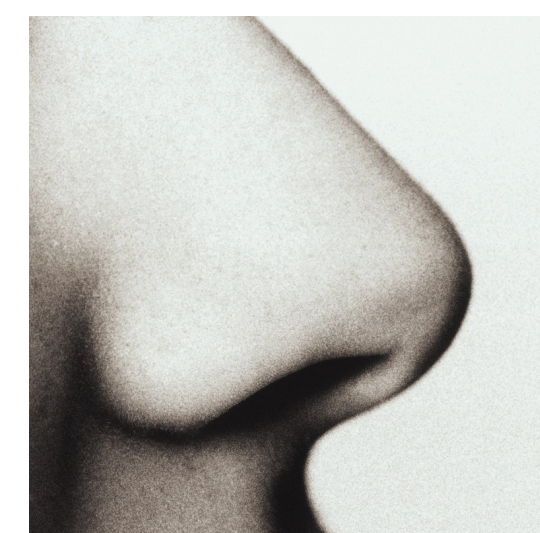


Frequently Asked Questions



Q. What is reclaimed water?

A. Reclaimed water is highly treated wastewater produced through an advanced wastewater treatment process. This process eliminates any harmful byproducts while retaining beneficial elements of an alternative water supply, for irrigating landscapes, washing vehicles, or filling aesthetic fountains.



Q. Does reclaimed water smell bad?

A. No, reclaimed water is disinfected, so the only thing you will notice is a slight chlorine odor.



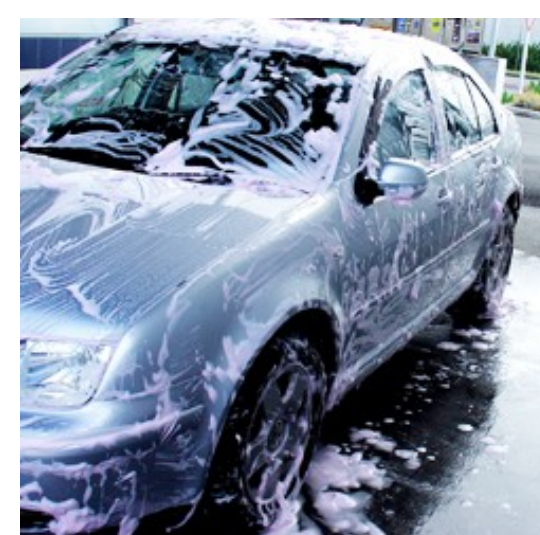
Q. What is the cost of reclaimed water service?

A. The proposed cost of reclaimed water has been set at 70% the cost of potable water, with no charge for meter installation and no base facility charge.



Q. Is reclaimed water safe?

A. Yes. Extensive treatment and disinfecting ensure that public health and environmental quality are protected. Reclaimed water must meet strict standards of quality established by the Florida Department of Environmental Protection. Physical contact with reclaimed water is not known to have any negative effects. However, reclaimed water should never be used for prolonged contact, cooking or consumption.



Q. What can I use reclaimed water for?

A. Reclaimed water can be safely used for non-potable uses, such as irrigation, vehicle washing and aesthetic fountains or ponds. Reclaimed water may NOT be used for activities like laundry, filling swimming pools, wading pools, hot tubs, water slides, etc.



Q. Can reclaimed water be used on my edible garden?

A. Reclaimed water can safely be used to water edible gardens, as long as the food is peeled, skinned, cooked or thermally processed before consumption. Drip irrigation is a recommended method of watering edible gardens.



Q. What are the benefits of using reclaimed water?

A. Using reclaimed water can reduce your monthly water bill, extend the life of our drinking water supply, and provide a source of water for irrigation during drought conditions. Additionally, the use of reclaimed water will postpone the need for funding of future potable water infrastructure.



Q. What is the availability of reclaimed water?

A. At times the availability of reclaimed water may be limited, due to a limited or reduced production rate. Otherwise, customers may irrigate anytime between the hours of 4:00 p.m. and 10:00 a.m.